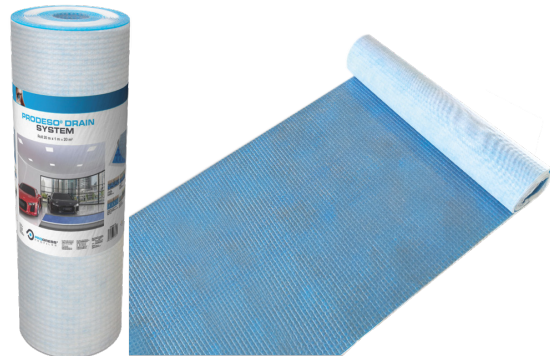
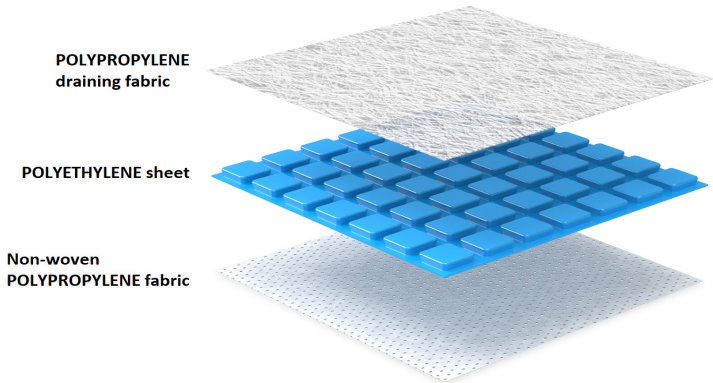




PRODESO DRAIN 4



DESCRIPTION

PRODESO DRAIN 4 is a draining, uncoupling membrane that allows the heat distribution, composed of a high-density polyethylene (HDPE) sheet, a non-woven draining polypropylene fabric and a polypropylene non-woven fabric. The cyan polyethylene sheet, 4 mm in height, is equipped with square studs, on which a draining non-woven polypropylene fabric is thermo-welded. Below, the membrane is completed with a polypropylene non-woven fabric, that ensures the membrane gluing to the support.

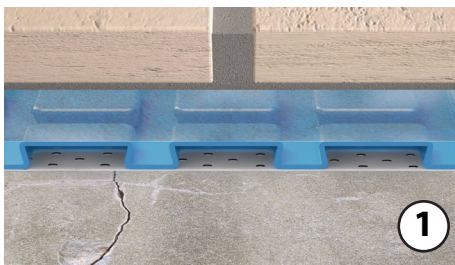
PRODESO DRAIN 4 is a draining and uncoupling membrane with a thickness of 4 mm. It does not require expansion joints in the screed before the installation of ceramic and natural stone.

PRODESO DRAIN 4 guarantees the flooring installation even on old flooring, cracked and not perfectly cured substrates and therefore with possible vapour pressure.

PRODUCT PLUS AND FUNCTIONS

1) Uncoupling

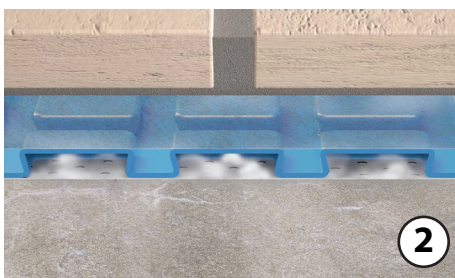
PRODESO DRAIN 4 neutralizes the differential movement that arise between the substrate and the flooring preventing breakage to the above floor; thanks to that, it is possible to install tiles on cracked substrates and wood. Using **PRODESO DRAIN 4**, where movement joints are present in the subfloor, the membrane should be continuous across these junctions.



1

2) Vapour management

The cavities below the square studs of **PRODESO DRAIN 4** guarantee the vapour management generated by the evaporation of residual moisture into the support; thanks to that **PRODESO DRAIN 4** could also be applied on substrates not perfectly cured or able to absorb humidity such as wood.



2

3) Micro ventilation and draining

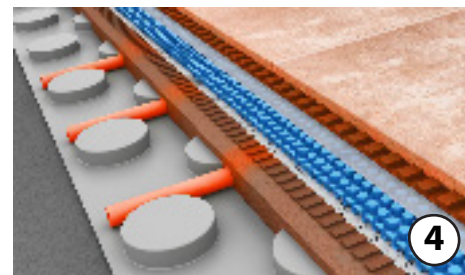
The air volume between the draining fabric and polyethylene sheet of **PRODESO DRAIN 4**, reduces drastically the curing of the adhesive used for the flooring installation and the effloresces on the grout surface.



3

4) Heat distribution

The air volume between the draining fabric and polyethylene sheet of **PRODESO DRAIN 4**, guarantees, in case of floor heating, a more uniform heat distribution and a thermal inertia reduction.



4

AREAS OF USE

Use

Uncoupling and draining membrane for cracked and not perfectly cured screed as:

- Wooden flooring
- Anhydrite and cementitious screed
- Cracked and not perfectly cured substrates
- Old ceramic and natural stones flooring
- Non perfectly cured concrete
- Wooden structures
- Floor heating systems.





PRODESO DRAIN 4

Very resistant to saline, solutions, acids and Alkalis, alcohol and oils.

Note: For further information on other backgrounds and preparation, contact Progress Profiles technical advisory and specification service

Do not use

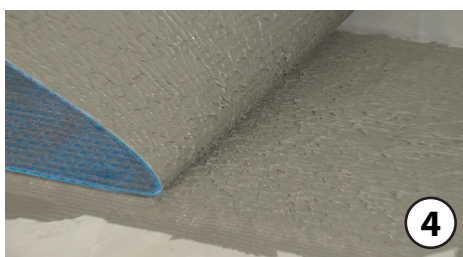
As waterproofing system, on bituminous coverings, on lightweight screeds not suitable for flooring installation. Do not use adhesives containing solvents for the PRODESO DRAIN 4 and flooring installation.

WARNINGS

For the installation of **PRODESO DRAIN 4** use a C2TS1 adhesive mixed with the maximum quantity of water declared on the bag. During the installation, the membrane must be protected against heavy mechanical loads to avoid damage. It is advisable to place running boards to protect the membrane whilst working. For information not explained in the technical details, please contact Progress Profiles technical advisory and specification service.

INSTALLATION INSTRUCTIONS

1. Cut **PRODESO DRAIN 4** to the desired length
2. Using a 6 x 6 mm notched trowel apply a C2ES1 adhesive on the substrate; make sure the trowel size is suitable for the support.
3. Place **PRODESO DRAIN 4** into the adhesive and press it using roller loaded at least with 15 kg.
4. Lift **PRODESO DRAIN 4** checking for full coverage; if full coverage is not achieved check the adhesive mix ratio and trowel size.
5. Install the next roll of **PRODESO DRAIN 4** and place it next to the previous one without overlapping.
6. Apply the adhesive on **PRODESO DRAIN 4** with a notched trowel suitable for the tile size and install the flooring.
7. Place expansion joints every 5 x 5 or 6 x 4 according with the European rule



TEXT TEMPLATE FOR TENDERS

Delivery and installation of draining and uncoupling membrane that allows the heat distribution, composed of a high-density polyethylene (HDPE) sheet, a non-woven draining polypropylene fabric and a polypropylene non-woven fabric. The cyan polyethylene sheet, 4 mm in height, is equipped with square studs, on which a draining non-woven polypropylene fabric is thermo-welded. Below the membrane a polypropylene non-woven fabric is glue ensuring its adhesion to the support, like PRODESO DRAIN 4 of Progress Profiles company.

PDES DR 201/E : Polyethylene membrane with a thermo-welded polypropylene draining fabric and polypropylene fabric on the back side

Roll length : _____ lm
 Roll height : _____ lm
 Material : _____ €/lm
 Installation : _____ €/lm
 Total value : _____ €/lm



PRODESO DRAIN 4

TECHNICAL DATA

Appearance	Polymeric membrane	
Colour	Grey / Cyan / White	
Shelf life	24 Months in dry environment avoiding direct sunlight and heat sources	
Total thickness	≈ 4 mm	EN 1849 - 2
Roll wide	≈ 100 cm	
Roll length	≈ 30 lm	
Weight of polypropylene fabric	≈ 70 g / m ²	EN 1849 - 2
Draining polypropylene weight	≈ 100 g / m ²	EN 1849 - 2
Weight of polyethylene sheet	≈ 600 g / m ²	EN 1849 - 2
Number of studs	≈ 3844 m ²	
Maximum load allowed	≈ 10 Kg / cm ²	
Thermal resistance	≈ 0,0818 m ² °K/W	UNI - EN 12667